

Standard Bag Filter Housing



Classic single bag filter housings manufactured by automated processes to provide high quality and consistency.

Benefits:

- Standard material 316L ss
- Automated welding system in Argon
- A press forming of the filter body now replaces the conventional ring usually welded inside the filter body to support the restrainer basket and to provide the seat for the bag. This is to prevent contamination guaranteeing the system integrity. (please see detail on the back of the page)
- Very small internal volume, minimum loss of product
- Lid held by means of standard reclining clamps, PTFE gasket could be easily compressed
- Stainless steel adjustable legs as a standard for size 1 & size 2
- Electropolished restrainer basket, full penetration welding between cylinder and perforated cap
- Our restrainer basket fits most of the standard filter housing

Standard IN & OUT connections are 2" BSP male for size 1 & 2 and 1½" BSP male for size 3 & 4, a flanged version can be obtained from standard screwing and welding threaded flanges on the standard BSP connections, they can be in accordance with various standards (ASME code, BSP, DIN etc.). Sanitary versions are available on application, they can be provided with DIN 11851 liners for food and beverage applications or with Tri-Clover for pharmaceutical use.

Standard finish is electropolished inside and outside; other surface finish treatments are available on application. (i.e. manual polishing, sand blasting etc.)

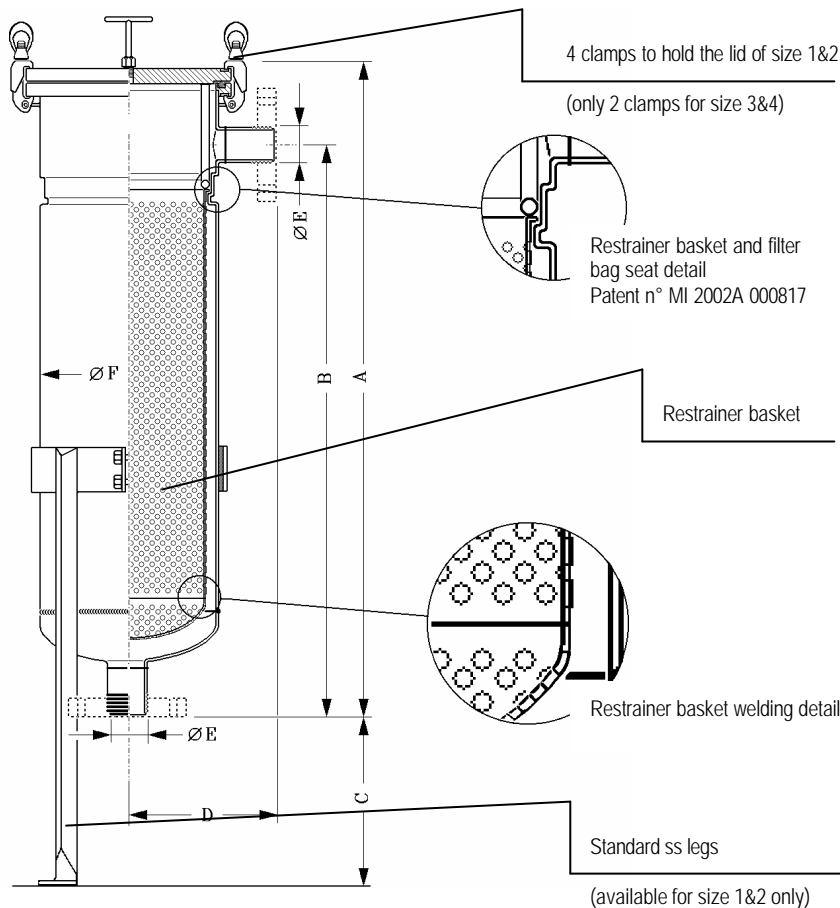
Please select the correct part number from the table below, outline dimensions on back of the page.

Main applications

- Paint & varnish
- Resins
- Solvents
- Water
- Process filtration in general
- Food and beverage applications
- Pharmaceutical applications

HOUSING CODE SELECTION

Standard single bag filter housing	Body material	Clamps material	Bag size	IN-OUT connections	IN-OUT connection size	Surface finish
series = MRS1	304ss = W 316ss = S	Zinced = C 304ss = W	1 = 1 2 = 2 1M = 3 2M = 4	BSP male = G BSP female = E DIN11851 liner = D DIN/BSP flange = F ASA flange = A Tri-Clover = T	1" = 25 1½" = 40 2" = 50 2½" = 65 3" = 80	Electropolishing = E Pickling = J Manual polishing = L
MRS1	S	C	2	G	50	E



Type	Filter bag size	Dimensions mm					Standard IN-OUT connections ØE	Sound Engineering Practice directive 97/23/EC application criteria		
		A	B	C	D	ØF		Internal Volume Litres	liquids Group 1 PSxV=200	Group 2 PSxV=10000
MRS 1 SC3 G 40	Size 3 (Ø102 x 229)	322	262	n.a.	103	114	1½" BSP male	2,70	8 bar	8 bar
MRS 1 SC4 G 40	Size 4 (Ø102 x 381)	475	415	n.a.	103	114	1½" BSP male	4,10	8 bar	8 bar
MRS 1 SC1 G 50	Size 1 (Ø178 x 419)	534	466	280 - 500	150	195	2" BSP male	13,90	8 bar	8 bar
MRS 1 SC2 G 50	Size 2 (Ø178 x 813)	920	852	0 - 500	150	195	2" BSP male	24,60	8 bar	8 bar

OPTIONAL FITTINGS AVAILABLE FOR MRS1 SERIES

- Pressure gauge/vent assembly
- Evacuation float integrated with the lid
- Stainless steel clamps

Note:

According to the Directive 97/23/CE "PED" - MRS1 pressure filter housings are manufactured as "Sound Engineering Practice" they do not require the CE stamp when handling "group1" fluids, nor handling "group 2" fluids (essentially water). Please see table above for max operating pressure.

Max operating temperature: in function of the liquid, the vapour tension must not exceed 0.5 bar (in any case the max temperature of the gasket must be always taken into account)

In accordance with the regulation each housing is provided with Instruction Handbook and declaration of compliance by the manufacturer.

For use in gas service please contact your local distributor.



All data correct at time of going to press. We reserves the right to modify data without prior notice