

Self-Cleaning Pump Intake Screens

PC

Protect pumps and water systems from surface water organics & debris

Wherever unprotected pump intakes are threatened by organic debris and other troublesome floating solids, LAKOS ISF Screens provide a continuous, intelligent defense against clogging, lost suction and pump wear. A rugged, reliable internal backwash system blows debris off of and away from the screen, allowing water to flow freely to the pump (see illustration at right).

Wide range of applications

Rivers, effluent ponds, sumps, lakes, re-use pits, streams, tanks, canals, etc.

Protects pumps

For centrifugal, turbine and submersible types: Safeguards against damage to impellers and restricted suction/cavitation.

Energy savings

Helps maintain pump efficiency, reducing the need to pump longer to deliver required water volume. Continuously clean screen eliminates potential head/pressure loss.

Reduces maintenance

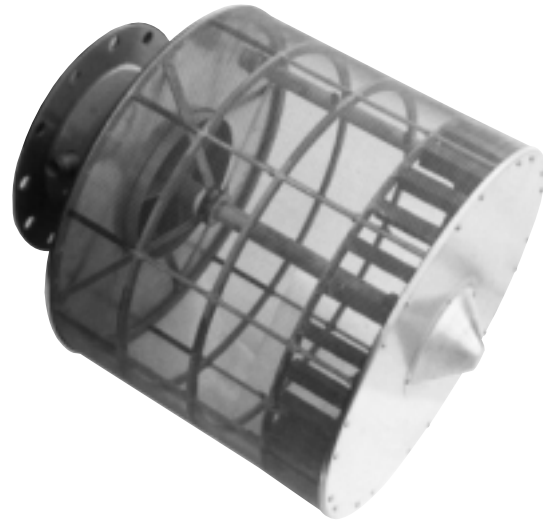
Continuous cleaning performance means no manual cleaning of stationary screens or routine system shutdowns.

Environmental protection

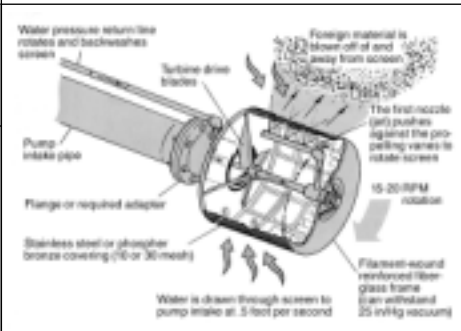
Low-velocity operation keeps fish, mussels, clams, etc. out of pump intakes.

Durable construction

Strong, deep-ribbed, reinforced fiberglass frame. Stainless steel end caps. Choice of corrosion-resistant stainless steel screen mesh or algae growth-inhibiting phosphor bronze screen mesh.



Flow range:
50 - 2,400 U.S. gpm
(11 - 545 m³/hr) per unit



Sample Installations

General Specifications

Dimensions

Warranty

PC Series

Limited Warranty

All products manufactured and marketed by this corporation are warranted to be free of defects in material or workmanship for 12 months from date of installation; if installed 6 months or more after ship date, warranty shall be a maximum of 18 months from ship date.

If a fault develops, notify us, giving a complete description of the alleged malfunction. Include the model number(s), date of delivery and operating conditions of subject product(s). We will subsequently review this information and, at our option, supply you with either servicing data or shipping instruction and returned materials authorization. Upon prepaid receipt of subject product(s) at the instructed destination, we will then either repair or replace such product(s), at our option, and if determined to be a warranted defect, we will perform such necessary product repairs or replace such product(s) at our expense.

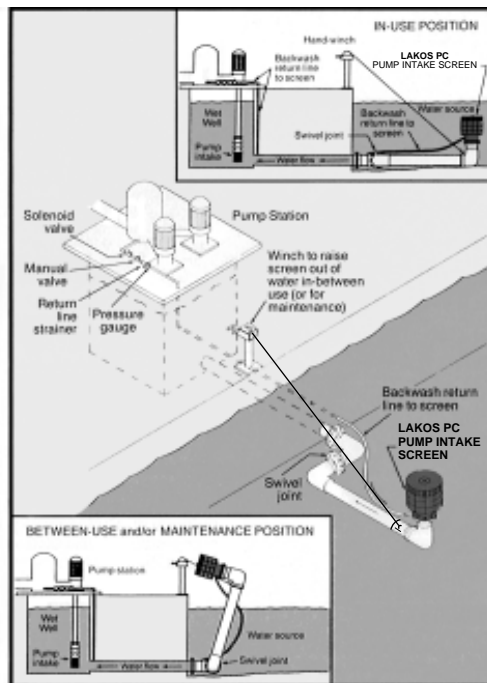
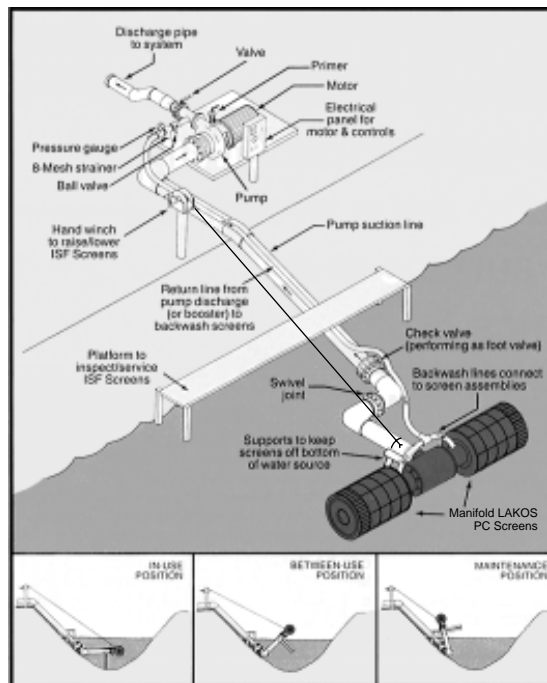
This limited warranty does not cover any products, damages or injuries resulting from misuse, neglect, normal expected wear, chemically-caused corrosion, improper installation or operation contrary to factory recommendation. Nor does it cover equipment that has been modified, tampered with or altered without authorization.

No other extended liabilities are stated or implied and this warranty in no event covers incidental or consequential damages, injuries or costs resulting from any such defective product(s).

Lakos Separators are manufactured and sold under one or more of the following U.S. Patents: 3,289,608; 3,512,651; 3,568,837; 3,701,425; 3,947,364; 3,963,073; 4,027,481; 4,120,795; 4,123,800; 4,140,638; 4,147,630; 4,148,735; 4,305,825; 4,555,333; 5,320,747; 5,338,341; 5,368,735; 5,425,876; 5,571,416; 5,578,203; 5,622,545; 5,653,874; 5,894,995; 6,090,276; 6,143,175; 6,167,960; 6,202,543; Des. 327,693; and corresponding foreign patents; other U.S. and foreign patents pending.

TEXPORT HandelsgesmbH
Peter Altenberg-Gasse 27
A-1190 WIEN, Austria

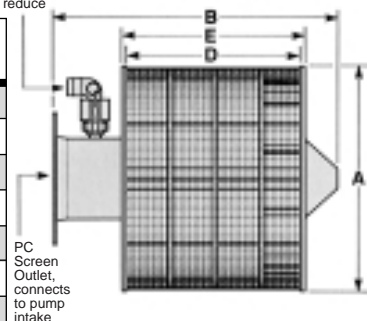
Phone: +43 (0)664 482 84 31
Fax: +43 (1) 440 46 13
E-mail: texport@A1.net
URL: texport-wien.com



Dimensions

Model	A		B		C	D		E	
	in.	mm	in.	mm	in.-NPT	in.	mm	in.	mm
PC 915	15	381	19	483	1-1/4	9	229	10	254
PC 1415	15	381	24	610	1-1/4	14	356	15	381
PC 924	24-1/2	622	19-1/2	495	1-1/4	9	229	10	254
PC 1424	24-1/2	622	24-1/2	622	1-1/2	14	356	15	381
PC 1924	24-1/2	622	29-1/2	749	1-1/2	19	483	20	508
PC 2424	24-1/2	622	34-1/2	876	1-1/2	24	610	25	635
PC 2924	24-1/2	622	39-1/2	1003	2	29	737	30	762
PC 3424	24-1/2	622	47	1194	2	34	864	35	889

C
Backwash
Return Line
Connection –
Do not reduce



General Specifications

Model	Maximum Flow Rate				PC Screen Outlet Pipe		Weight		*Required Backwash Pressure		Approximate Backwash Flow at Proper Pressure	
	10 & 18 Mesh		30 Mesh		in	mm	lbs.	kg	psi	bar	U.S. gpm	m ³ /hr
PC 915	350	80	250	60	6	152	27	12.3	55-80	3.8-5.5	10	2.5
PC 1415	560	130	400	90	6	152	29	13.2	60-80	4.1-5.5	15	3.5
PC 924	650	150	450	105	10	254	50	22.7	60-100	4.1-6.9	12	2.5
PC 1424	1000	230	700	160	10	254	53	24.1	65-100	4.5-6.9	18	4.0
PC 1924	1350	305	950	215	10	254	55	25.0	70-100	4.8-6.9	25	5.5
PC 2424	1700	385	1200	275	12	305	65	29.5	75-100	5.1-6.9	36	8.0
PC 2924	2050	465	1450	330	12	305	75	34.1	75-100	5.1-6.9	41	9.5
PC 3424	2400	545	1700	385	16	406	89	40.5	75-100	5.1-6.9	50	11.5

* Required pressure range for the backwash return line at the PC Screen connection.

IMPORTANT: See Dimension for Backwash Return Line Connection size. This is also the *minimum* line size.

Frame & Propelling Vanes: Fiberglass
End Caps: Stainless steel
Interior Pipe & Fittings: Stainless steel

Screen Outlet: Epoxy painted carbon steel or stainless steel
Screen: 10, 18 or 30 mesh stainless steel
Bushings: Ultra-High Molecular Weight polyethylene

