

**TAG Racing International
Engine Specification Form
125cc TAG Engine**

Manufacturer Address

PRD TAIWAN

6F, No16 Nanking East

Road, Section 5, Taipei TW

TAG Engine

#

Page 1 of 8

Manufacturer :	PRO RACE DESIGN
Make :	PRD
Model°:	RK125 WC (FIREBALL)
Inlet type :	REED VALVE
Number of pages :	EIGHT

PICTURE OF ENGINE

(front - left)



(back - right)



Official Signature and Stamp

Importer	

TECHNICAL INFORMATION

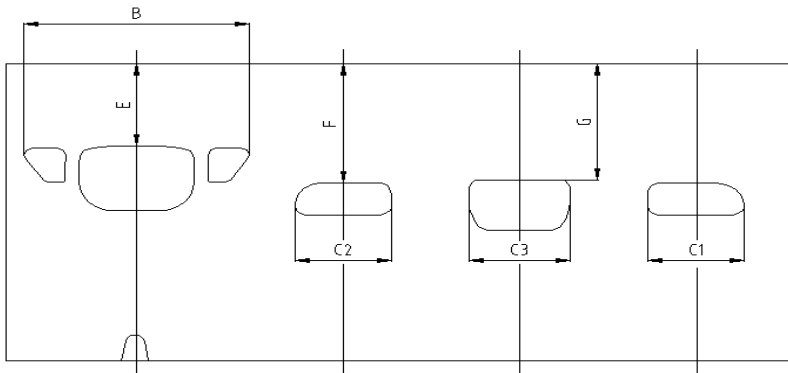
A	CHARACTERISTICS	
	Measurement	Tolerances
Volume of cylinder	122.25 cc	125 cc
Original bore	53.68 mm	
Theoretical maximum bore	54.25 mm	
Stroke	54 mm	+/- 0.05 mm
Cooling system	WATER COOLED	
Number of carburation systems	Tillotson (HL-360) ONE ONLY	
Number of transfer ports / ducts, cylinder / sump	3	
Number of exhaust ports / ducts	3	
Shape of the combustion chamber	SPHERICAL WITH SQUISH	
Length between axes of the connecting rod	100 mm	+/- 0.10 mm
Minimum weight of connecting rod	100 grams	+/- 5 grams
Volume of combustion chamber	11 cc	+/- 0.5 cc
Type of bearings and size (example) 6205 type	Big End of Con. Rod Bearing = 18 X 24 X 14.8 Little End of Con. Rod Bearing = 14 X 18 X 17.2 Crankshaft Bearing = 25 X 52 X 15	

B	OPENING ANGLES	
Exhaust	174°	+/- 1°
Of exhaust ports / ducts	174°	+/- 1°

C	LIST OF ACCESSORIES INCLUDED	
(List accessories as shown below)	<i>Centrifugal clutch</i>	
<i>Carburetor with butterfly Ø27</i>		
<i>Electric starter</i>		
<i>Exhaust with flex</i>		

D	MATERIAL	
Cylinder	ALLOY	
Connecting rod	STEEL FOREED	
Crankshaft	STEEL FOREED	
Head	ALLOY	
Liner	CAST IRON	
Crankcase	ALLOY	
Piston	ALLOY	
Piston Ring	CAST STEEL	

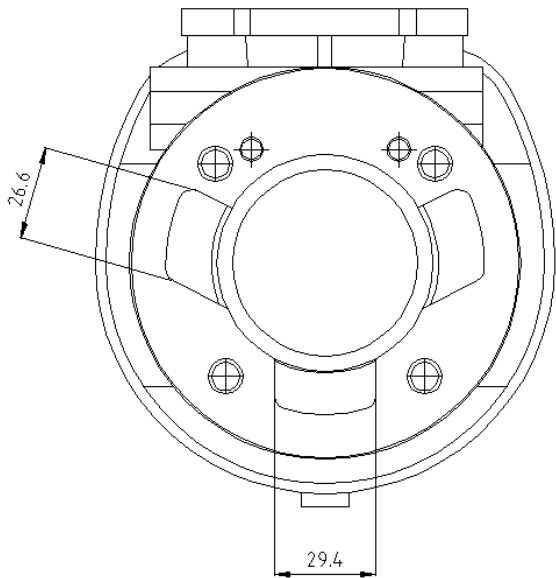
DRAWING OF THE CYLINDER DEVELOPMENT



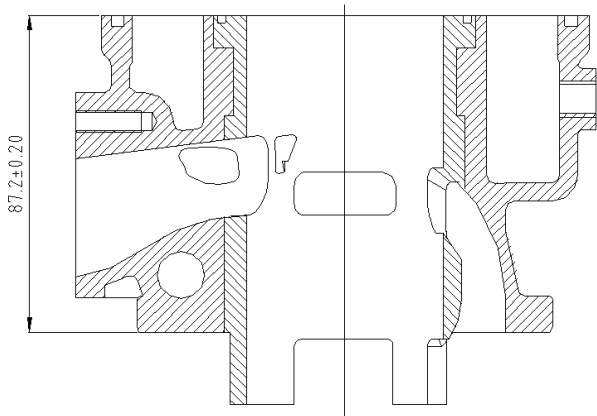
Chord reading
B = 65.3 mm
C1 = C2 = 26 mm
C3 = 29.4 mm
Angular reading by inserting a 0.2mm gauge
E = 33.5 mm
F = 43 mm
G = 43 mm

+/- 0.20 mm ON ALL CAST MEASUREMENT

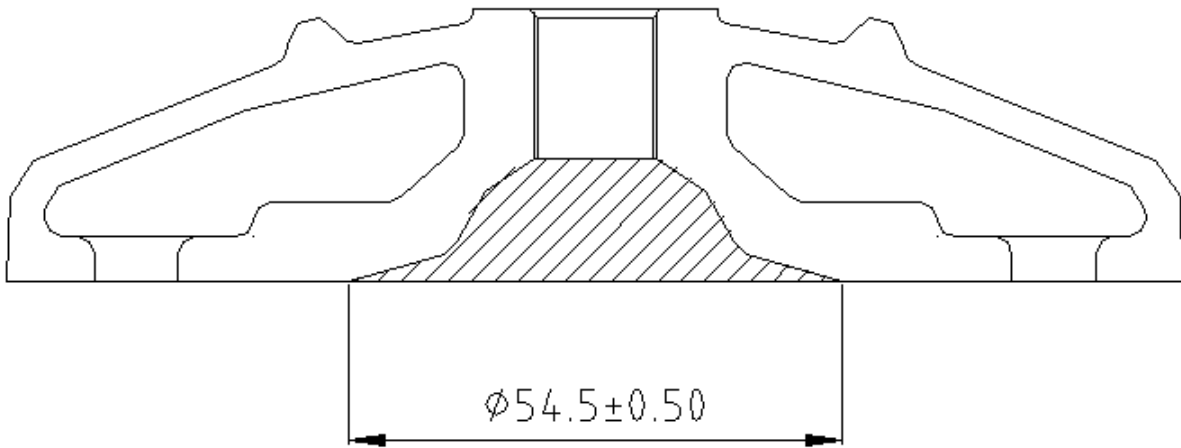
DRAWING OF THE CYLINDER BASE



CYLINDER SECTION VIEW

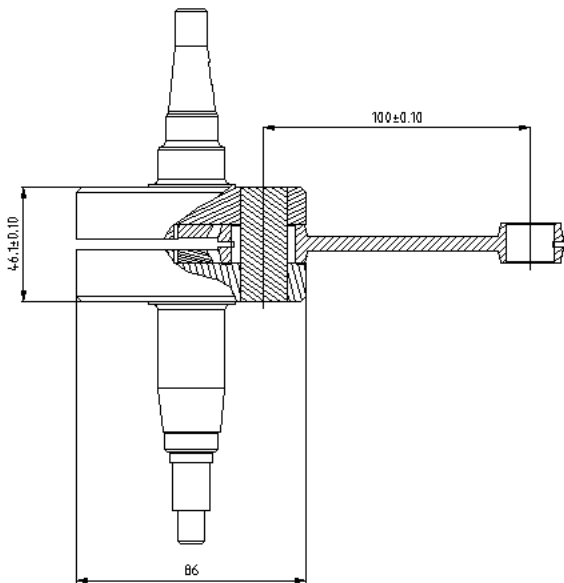


DRAWING OF THE CYLINDER HEAD AND THE COMBUSTION CHAMBER



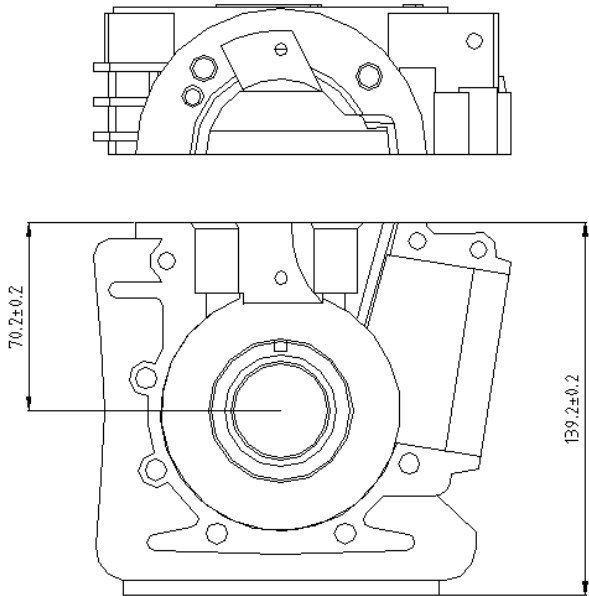
Combustion chamber volume = 11 cc Tolerance = +/- 0.5 cc



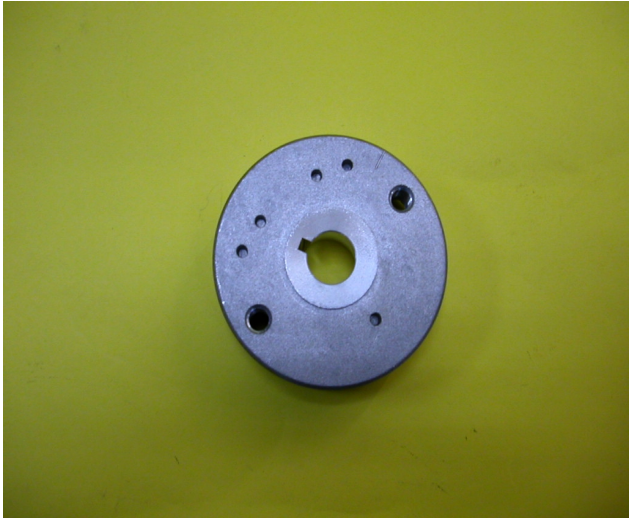
DRAWING OF THE CRANKSHAFT



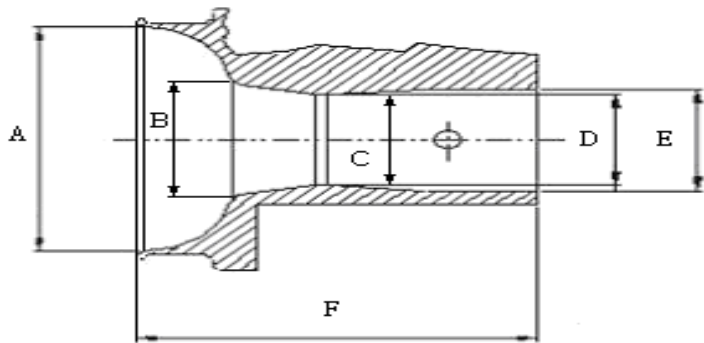
Complete weight = 1975 grams
Tolerance = +/- 10 grams

DRAWING OF THE INSIDE OF SUMP



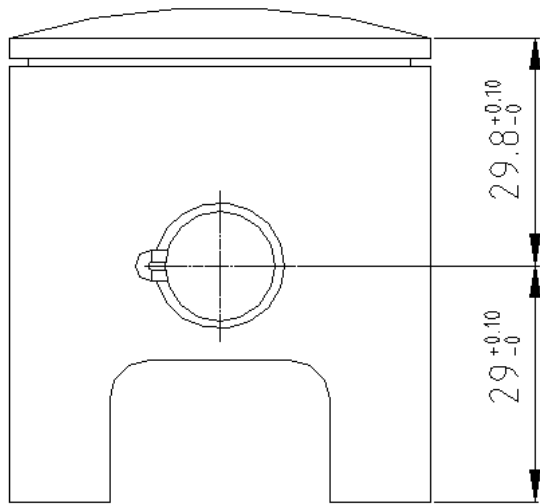
IGNITION	
Manufacturer°:	OPPAMA
Model Number°:	PRD/OPPAMA/2004
Rotation°:	A/CLOCKWISE
Description°:	CDI
PHOTO OF IGNITION	PHOTO OF COIL
	
	

CARBURETOR DIMENSION



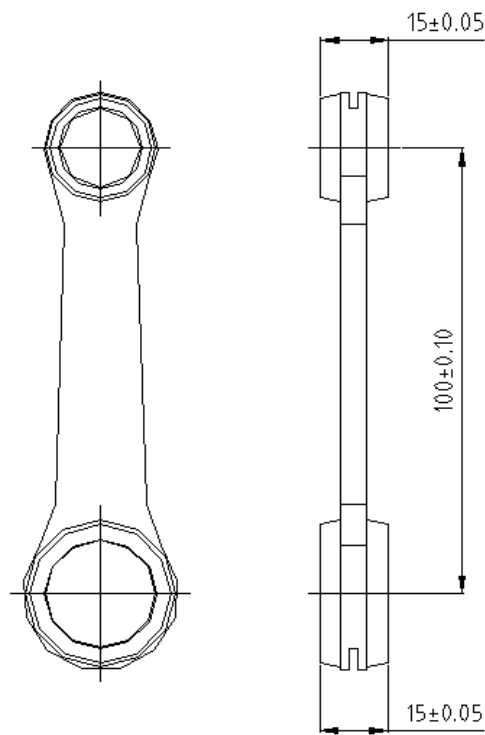
Item	Measure	Tolerance
A	33.75 mm	+/- 0.20 mm
B	24 mm	+/- 0.10 mm
C	24 mm	+/- 0.10 mm
D	27 mm	+/- 0.10 mm
E	66.25 mm	+/- 0.10 mm
F		

PISTON



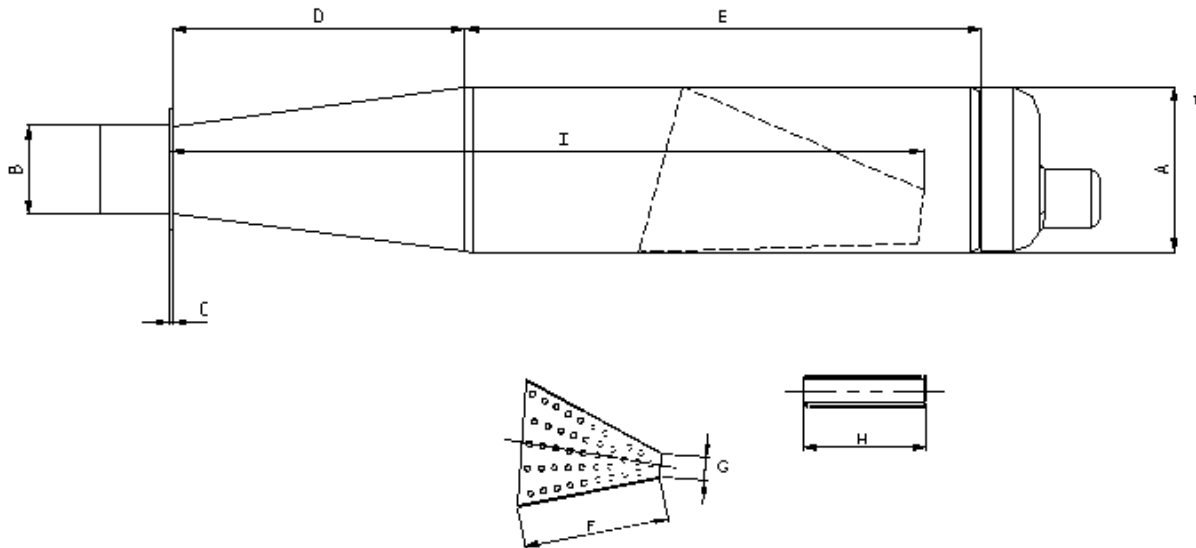
Weight = 135 grams Tolerance = +/- 5 grams

CONNECTING ROD



Weight = 100 grams Tolerance = +/- 5 grams

DRAWING OF THE SILENCER AND IT S COMPONENTS



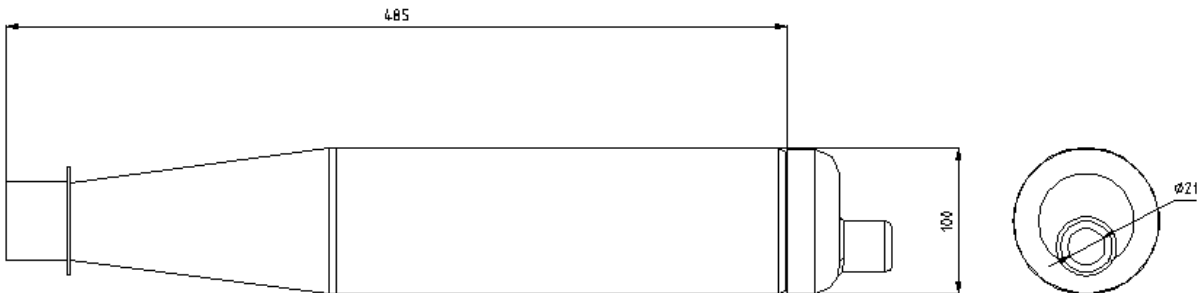
The end parts of the silencer must have two soldered pairs of lugs (one pair at the top and one pair at the bottom) to allow for fixing of seals by the Organizer so that the silencer may be opened during the competition.

Measurements:

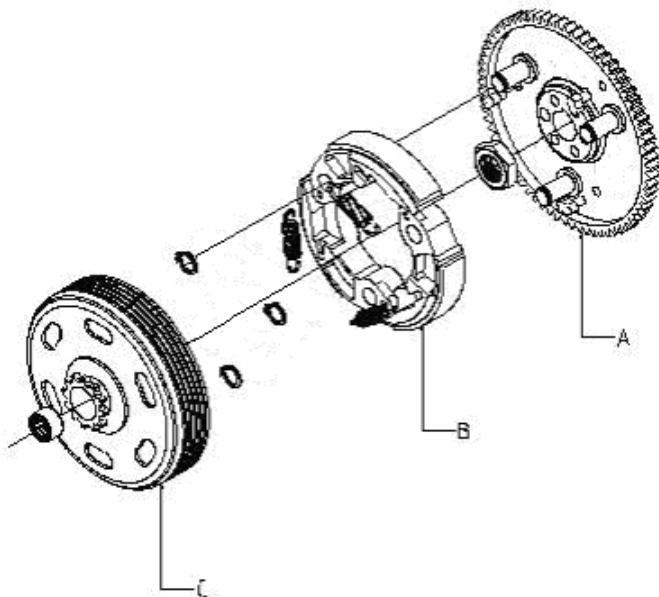
- A: 100 mm
- B: 54 mm
- C: 3 mm
- D: 170 mm
- E: 315 mm
- F: 170 mm
- G: 21 mm
- H: 135 mm
- I: 455 mm

+/- 0.50 ON ALL MEASUREMENTS

DRAWING OF THE SILENCER



DRAWING OF THE CLUTCH



Item	Weight	Tolerance
A	416 grams	+/- 5 grams
B	48 grams/1pc	+/- 5 grams
C	356 grams	+/- 5 grams